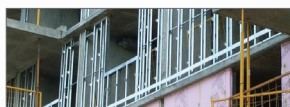
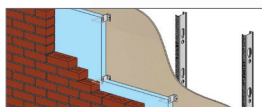


ECONO-CONNECTOR SURFACE MOUNT BRICK TIES

Introducing the Bailey
ECONO-CONNECTOR,
a versatile surface mounted
connector designed to
connect brick veneer to the
structural backup system.



The **ECONO-CONNECTOR** is suitable for mounting on durable surfaces and is available in galvanized and stainless steel for varying depths of exterior insulation. **ECONO-CONNECTORS** are universal to all Bailey steel framing systems.



sales@bmp-group.com | www.bmp-group.com

BAILEY[®]
METAL PRODUCTS LIMITED

MONTREAL
800-263-3455

• TORONTO
800-668-2154

• CALGARY
800-665-2013

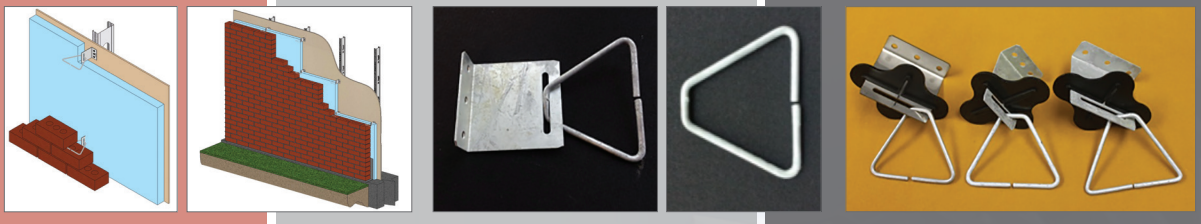
• EDMONTON
800-563-1751

• VANCOUVER
800-818-2666

THE STRENGTH WITHIN



BAILEY ECONO-CONNECTOR BRICK TIES



Performance:

The **ECONO-CONNECTOR**, available in hot dip galvanized and stainless steel, is manufactured from 16ga (1.372mm) sheet metal conforming to ASTM A1008 and stainless steel conforming to ASTM A666. The hot dipped galvanized finish conforms to CSA A370 and ASTM A153 requirement of 460g/m²/side of zinc coating. HDG and ESS connectors are manufactured from 50ksi minimum yield strength steel. In tests **Bailey Surface Mount Brick Connectors** limit any free play significantly below the CSA standard of up to 1.2mm.

Fastener Information:

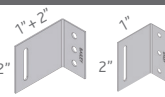
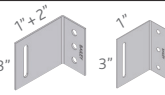
- Compatible fasteners for structural framing or masonry are available.
- Fasteners need to have a coating (corrosion resistance) equal to that of the connector to reduce the risk of galvanic corrosion.

V-Wire:

Bailey V-Wire is manufactured from 4.76mm diameter wire conforming to CSA Standard G30.3. The hot dip galvanized finish conforms to CSA A370 and ASTM A153 requirements of 460g/m²/side of zinc coating. The stainless steel wire conforms to ASTM A580.

Insulation Support:

The insulation support is manufactured from polyethylene. The support fits over the **ECONO-CONNECTOR** and holds the sheathing in place, preventing the insulation from separating from the back up wall.

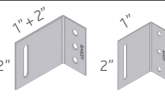
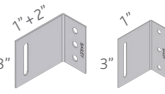
ITEM	Mechanical Free Play	Serviceability at 0.45 kN (100 lbs)		Factored Resistance
 ECONO Galvanized 2"	0.145 mm max. (0.0057")	Tie mounted directly to durable surface		1.437 kN (323 lbs.)
		Deflection	Deflection + Free Play	
		0.478 mm (0.019")	0.623 mm max. (0.025")	
 ECONO Galvanized 3"	0.145 mm max. (0.0057")	Tie mounted directly to durable surface		1.312 kN (295 lbs.)
		Deflection	Deflection + Free Play	
		0.335 mm (0.015")	0.526 mm max. (0.021")	

NOTES: * The data reported is based on connector testing in accordance with CSA A370, Connectors for Masonry.

* Both compression and tension capacities of the Econo-Connector were tested with the governing values listed.

* The factored resistance value does not consider fastener resistance. A compatible fastener with adequate factored resistance is recommended.

* The factored resistance value has been adjusted for the steel yield stress - 50/58 = 0.862.

ITEM	Mechanical Free Play	Serviceability at 0.45 kN (100 lbs)		Factored Resistance
 ECONO Stainless 2"	0.406 mm max. (0.016")	Tie mounted directly to durable surface		1.717 kN (386 lbs.)
		Deflection	Deflection + Free Play	
		0.728 mm (0.029")	1.134 mm max. (0.045")	
 ECONO Stainless 3"	0.406 mm max. (0.016")	Tie mounted directly to durable surface		1.517 kN (341 lbs.)
		Deflection	Deflection + Free Play	
		0.347 mm (0.014")	0.753 mm max. (0.030")	

NOTES: * The data reported is based on connector testing in accordance with CSA A370, Connectors for Masonry.

* Both compression and tension capacities of the Econo-Connector were tested with the governing values listed.

* The factored resistance value does not consider fastener resistance. A compatible fastener with adequate factored resistance is recommended.

Reference Standards:

CSA A370-14 – Connectors for Masonry

ASTM A153 – Standard Specification for Zinc Coating (Hot-Dip) on Iron and Steel Hardware

ASTM A580 – Standard Specification for Stainless Steel Wire

ASTM A666 – Standard Specification for Annealed or Cold-Worked Austenitic Stainless Steel Sheet, Strip, Plate, and Flat Bar

CSA G30.3 – Cold-Drawn Steel Wire for Concrete Reinforcement

ASTM A1008 – Standard Specification for Steel, Sheet, Cold-Rolled, Carbon, Structural, High-Strength Low-Alloy, High-Strength Low-Alloy with Improved Formability, Solution Hardened, and Bake Hardenable

sales@bmp-group.com | www.bmp-group.com



BAILEY
METAL PRODUCTS LIMITED

MONTREAL

800-263-3455

TORONTO

800-668-2154

CALGARY

800-665-2013

EDMONTON

800-563-1751

VANCOUVER

800-818-2666

