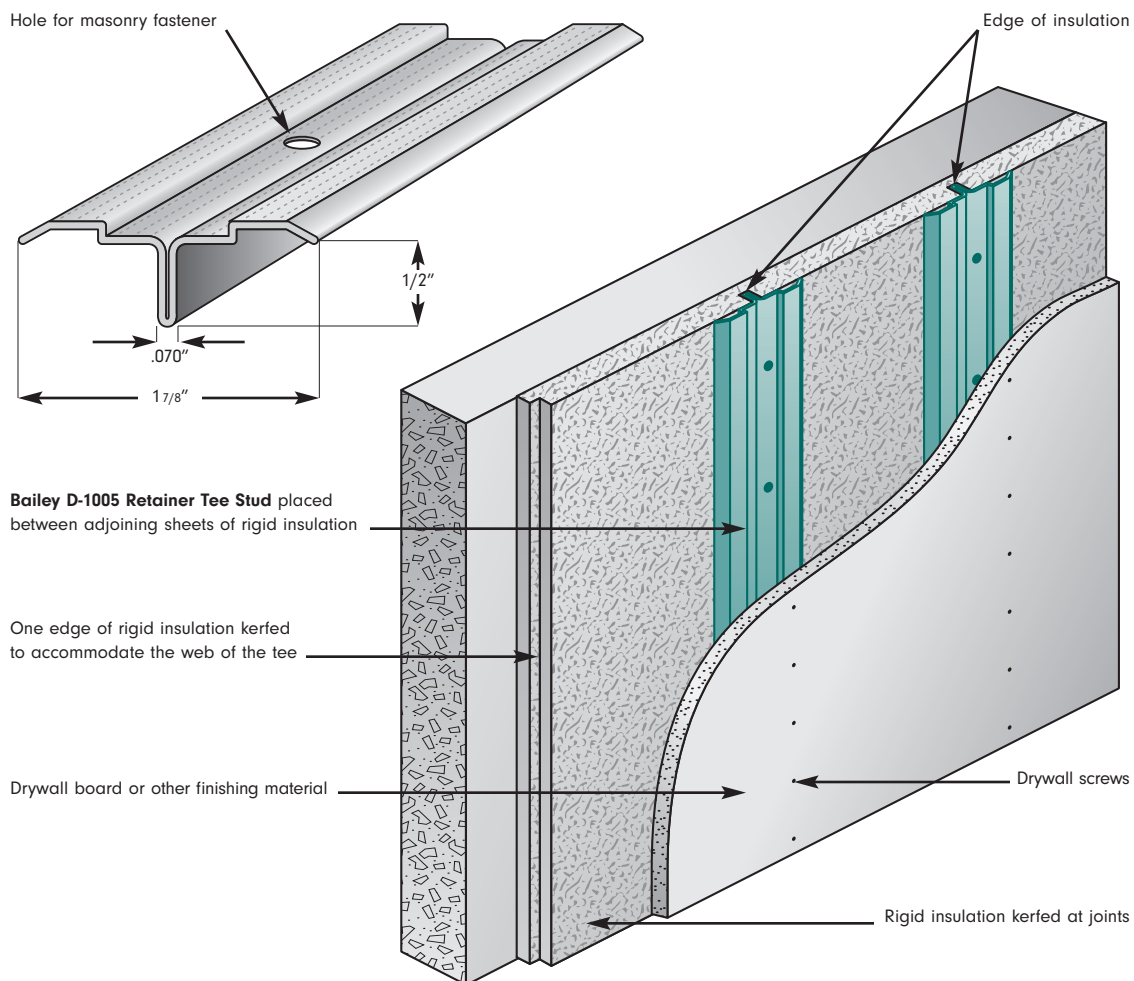




D-1005 RETAINER TEE STUD

The Bailey Retainer Tee is specifically designed to hold rigid insulation against a masonry wall. Bailey Retainer Tee is manufactured from zinc-coated steel with pierced holes for securing the "Tee" to the masonry wall. The top surface is knurled to easily accept screws to secure drywall. Fasten the Retainer Tee section through the insulation back to the masonry structure using suitable fasteners; type and spacing as specified. The Bailey Retainer Tee is placed between adjoining sheets of rigid insulation in a "kerf" (slot), formed along the edge of one of the sheets. The "kerf", with dimensions of $1/4" \times 5/8"$, is sized to provide complete clearance for the web of the Bailey Retainer Tee. This will assure a tight joint between sheets for effective insulation.



NOTE: Retainer Tee is normally installed at 24" on center to suit the width of the insulation.