

Technical Data for **BAILEY PLATINUM™ PLUS** INTERIOR DRYWALL FRAMING SYSTEM



Bailey is pleased to introduce **PLATINUM™ PLUS** interior drywall framing system. **PLATINUM™ PLUS** products are stronger, hold drywall screws better, and build higher walls. Wall limiting heights, and other product qualities meet or exceed Canadian building code and all other applicable standards.

STRUCTURE

PLATINUM™ PLUS stud strength is demonstrated by superior limiting height values. Limiting wall heights exceed standards and are shown on back page.

FIRE

The Bailey **PLATINUM™ PLUS** steel stud and track system provides maximum fire safety for all your building designs. Tested to both ASTM E119 and CAN/ULC-S101, the fire-test methods and fire-resistance ratings are certified in Canada by our adherence to the acceptance criteria in CAN/ULC-S101.

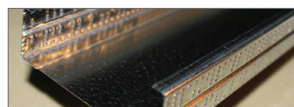
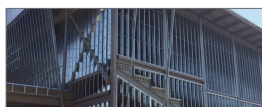
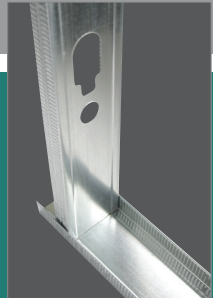
Maximum Fire Resistance, UL and ULC approved fire tests.

ASTM E119 – Standard Methods of Fire Endurance Tests of Building Construction and Materials

SOUND

The building industry measures the sound control that a wall will provide with a rating system called Sound Transmission Classification or S.T.C. This is a measure of the ability for a particular wall to reduce the transmission of airborne sound. The S.T.C. rating is based on tests conducted to industry recognized A.S.T.M. standards. When we compare and rate different materials and assemblies as to how they perform in providing improved sound control, Bailey **PLATINUM™ PLUS** framing products contribute equal to or better than other 25 gauge framing systems, and generally better than comparable assemblies framed with 20 gauge studs.

As tested at the National Research Council of Canada per test reports #3508.1, 3508.2, 3508.3, 3508.4, 3508.5, 3508.6, 3508.7, 3508.8



sales@bmp-group.com | www.bmp-group.com

BAILEY[®]
METAL PRODUCTS LIMITED

MONTREAL
800-263-3455

TORONTO
800-668-2154

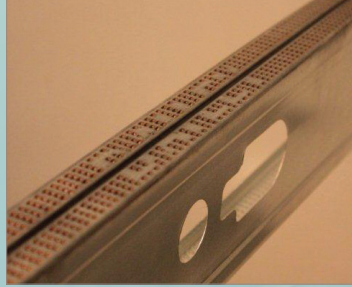
CALGARY
800-665-2013

EDMONTON
800-563-1751

VANCOUVER
800-818-2666

THE STRENGTH WITHIN





PLATINUM PLUS™ DRYWALL FRAMING SYSTEM

Interior Composite Limiting Wall Height Table

STUD DESIGNATION	Spacing o.c. (in.)	5 PSF			10 PSF		
		L/120	L/240	L/360	L/120	L/240	L/360
162S125-PLAT25	12	13'-10"	11'-7"	10'-3"	11'-0"	9'-2"	8'-2"
	16	12'-7"	10'-6"	9'-4"	10'-0"	8'-3"	-
	24	11'-0"	9'-2"	8'-2"	8'-2"f	-	-
250S125-PLAT25	12	16'-3"	13'-7"	11'-11"	12'-9"f	10'-9"	9'-0"
	16	14'-9"	12'-4"	10'-10"	11'-1"f	9'-5"	7'-10"
	24	12'-9"f	10'-9"	9'-0"	9'-0"f	7'-10"	-
250S125-33	12	17'-10"	14'-0"	12'-1"	14'-0"	10'-11"	9'-6"
	16	16'-6"	13'-0"	11'-2"	12'-11"	10'-1"	8'-6"
	24	15'-0"	11'-8"	10'-0"	11'-8"	9'-0"	-
362S125-PLAT25	12	20'-5"	16'-10"	14'-9"	14'-5"f	13'-5"	11'-8"
	16	17'-8"f	15'-4"	13'-5"	12'-6"f	12'-2"	10'-4"
	24	14'-5"f	13'-5"	11'-8"	10'-3"f	10'-3"f	8'-9"
362S125-33	12	22'-6"	17'-11"	15'-7"	17'-11"	14'-1"	12'-4"
	16	20'-10"	16'-6"	14'-4"	16'-5"	13'-0"	11'-4"
	24	18'-7"	14'-8"	12'-10"	14'-8"	11'-7"	10'-1"
600S125-PLAT25	12	25'-11"f	23'-8"	20'-8"	18'-4"f	18'-4"f	16'-5"
	16	22'-6"f	21'-6"	18'-9"	15'-11"f	15'-11"f	14'-10"
	24	18'-4"f	18'-4"f	16'-5"	13'-0"f	13'-0"f	12'-8"
600S125-33	12	33'-10"	26'-10"	23'-6"	26'-10"	21'-4"	18'-6"
	16	30'-11"	24'-6"	21'-6"	24'-6"	19'-5"	16'-11"
	24	27'-5"	21'-7"	19'-0"	19'-0"	17'-2"	14'-11"

• These tables were engineered by Prof. R.M. Schuster, University of Waterloo, in accordance with the Canadian Standards Association (CSA) Standard CAN/CSA-S136-01, North American Specification for the Design of Cold-Formed Steel Structural Members (including the 2004 Supplement) and the National Building Code of Canada 2005.

• The loads shown are specified uniform lateral loads.

• The strength of the composite assemblies is based on a series of wall tests conducted at Oregon State University, as reported in "Final Report on Composite Wall Tests", July 1997 by Y. Lee and T.H. Miller.

• Inside corner radii is 0.09375" and 0.0764" on PLAT 25 and 33 respectively.

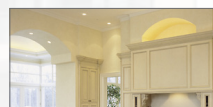
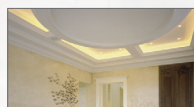
• Flange width is 1.25", and stiffening lip length is 0.188" on all Bailey interior non-load bearing studs.

• 20 gauge stud is produced from steel having at least 33 ksi yield strength and minimum thickness of 0.0329".

• 25 gauge stud Bailey Plat25 is produced from high quality, material carefully specified to perform to system demands. Roll forming techniques, profile design, and specific material characteristics combine to achieve published wall height tables.

• Limiting wall heights exceed all applicable standards for 1 5/8", 2 1/2", 3 5/8" and 6" framing studs.

• (f) indicates that flexure controls.



sales@bmp-group.com | www.bmp-group.com

PFTB115-1000



MONTREAL

800-263-3455

TORONTO

800-668-2154

CALGARY

800-665-2013

EDMONTON

800-563-1751

VANCOUVER

800-818-2666

